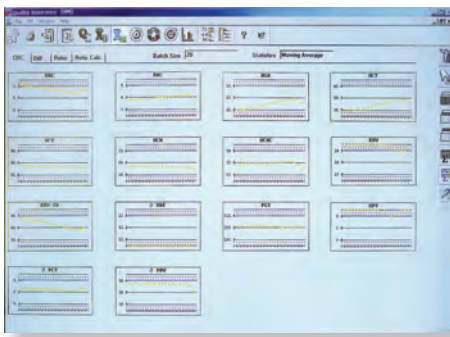


Higher performance
with **you** in mind.

The **COULTER LH 780**
Hematology Systems

Chemistry
Lab Automation
Information Systems
Molecular Diagnostics
Immunodiagnosics
Centrifugation
Disease Management
Hematology
Hemostasis
Flow Cytometry
Primary Care





Obtain an exponentially weighted moving average (EWMA) of CBC, 5-Part Diff and NRBC, as well as reticulocyte parameters, with the XM QC package.

Intuitive User Interface

The improved user interface of the LH 780 series is carefully designed to be easy to learn and intuitive to use, yet with more features than ever before. To facilitate



Productivity is optimized by the easy-to-understand user interface, with its robust reporting and enhanced data handling capabilities.

information access and control, key screens have been redesigned and expanded, providing the most frequently used data and information on one screen.

COULTER LH SlideMaker and LH SlideStainer

The LH 780 configured with LH SlideMaker and LH SlideStainer streamlines one of your lab's most time-consuming manual tasks with automated slide preparation. By eliminating complex tracks for specimen delivery, the LH SlideMaker and LH SlideStainer help decrease errors and increase accuracy with simple, no-prep loading. Operators simply insert sample cassettes into the workcell and return later to remove stained blood films with clear slide labeling, stain-resistant labels and optional bar coding.

Extended Quality Control Packages

Consistency and accuracy are paramount concerns of our customers, so LH 780 analyzers empower them with precision tools for quality control.

The XM quality control package provides an exponentially weighted moving average (EWMA) of CBC, 5-Part Diff and NRBC, as well as reticulocyte parameters. Batch sizes are user-configurable for two to 1,000 runs, for up to 20 batches.



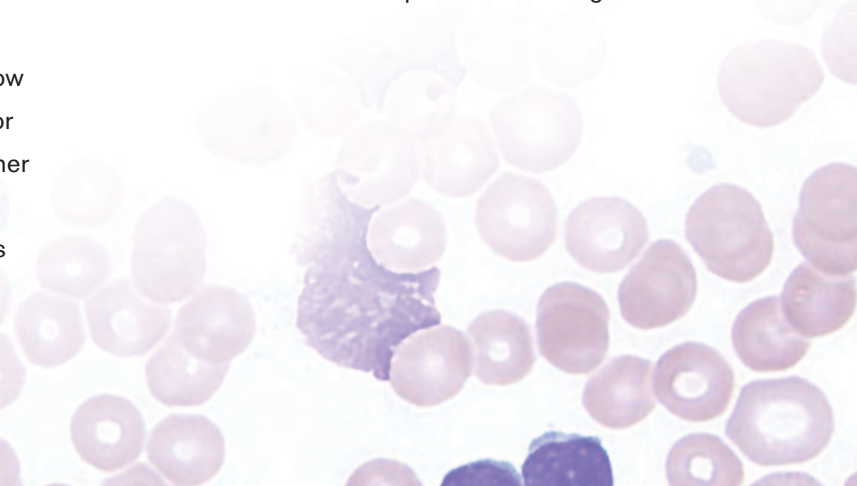
Extended QC Rules provide for the verification of random error or imprecision, systematic error or bias, and total error or inaccuracy.

Extended QC Rules, an additional quality control package, incorporates medically-based performance standards and provides user-enabled

rules for the verification of random error or imprecision, systematic error or bias, and total error or inaccuracy. Plus, you can enhance your ability to manage QC data files with designated QC file filters.

Environmentally-Friendly Consumables

Consumables are an all-important consideration in any laboratory because they can help optimize both workflow and performance. The LH 780 analyzers offer two major advancements in this area. COULTER LH Series Cleaner offers a new, improved formaldehyde-free formulation. COULTER LIN-C Linearity Control significantly extends the reportable range for four pivotal LH 780 series parameters: WBC, RBC, HGB and PLT. Cyanide-free reagents are also available.



COULTER LH 780 Hematology Analyzer Specifications

Available Parameters

WBC	MO%	Hgb	RET #	
NE#	EO#	HCT	RET %	Plt
NE%	EO%	MCV	IRF (Immature Reticulocyte Fraction)	MPV (Mean Platelet Volume)
LY#	BA#	MCH	MRV (Mean Reticulocyte Volume)	
LY%	BA%	MCHC		
MO#	RBC	RDW		
RDW-SD				
NRBC%				
NRBC#				

LH 780 Throughput

Mode	Samples/Hour
CBC Only	110
CBC/Diff	110
RET Only	45

Linearity/Operating Ranges

Parameters	Linearity Range	Operating Range
WBC	0.00 to 400.00 x 10 ³ cells/μL	0.00 to 900.00 x 10 ³ cells/μL
RBC	0.00 to 8.00 x 10 ⁶ cells/μL	0.00 to 20.00 x 10 ⁶ cells/μL
Hgb	0.0 to 25.0 g/dL	0.0 to 99.9 g/dL
Plt	0 to 3000 x 10 ³ cells/μL	0 to 5000 x 10 ³ cells/μL
NE#, LY#, MO#, EO#, BA#	0 to 900 x 10 ³ cells/μL	
RET%		0.0 to 100.0%
RET #		0.0 to 999.9 x 10 ⁶ cells/μL

Precision

Parameters	Limit	Parameters	Limit
WBC at 9 to 11 x 10 ³ cells/μL	≤1.7% CV	NE% at 50 to 60%	2SD ≤3.0
RBC at 4.5 to 5.5 x 10 ⁶ cells/μL	≤0.8% CV	LY% at 25 to 35%	2SD ≤3.0
Hgb at 14 to 16 g/dL	≤0.8% CV	MO% at 5 to 10%	2SD ≤2.0
MCV at 80 to 90 fL	≤0.8% CV	EO% at 2 to 5%	2SD ≤1.0
RDW at 12 to 14%	≤2.2% CV	BA% at 0.5 to 1.5%	2SD ≤1.0
Plt at 280 to 320 x 10 ³ cells/μL	≤3.3% CV	RET% at 0.0 to 0.49%	SD ≤0.23 or CV% ≤16.5
Plt at 90 to 110 x 10 ³ cells/μL	≤6.6% CV	RET% at 0.5 to 1.49%	SD ≤0.23 or CV% ≤14.5
Plt at 10.0 to 15.0 x 10 ³ cells/μL	≤14.0% CV	RET% at 1.50 to 4.00%	SD ≤0.68 or CV% ≤11.0
MPV at 8 to 10 fL	≤2.2% CV	RET% at 4.01 to 15.00%	SD ≤0.68 or CV% ≤5.5
RDW-SD at 33 to 48 fL	≤2.5% CV		

NRBC Accuracy Characteristics

Parameter:	NRBC
Units:	% (NRBC/100 WBC)

Comparison to Predicate Analyzer

Population Minimum:	0.00
Population Maximum:	24.11
Mean Difference:	0.08

Comparison to Manual Method

Population Minimum:	0.0
Population Maximum:	61.50
Mean Difference:	-0.02

Dimensions and Weight

	Height	Width	Depth	Weight
Analyzer/Diluter	88.9 cm (35.0 in)	101.6 cm (40.0 in)	61.0 cm (24.0 in)	93.2 kg (205.0 lb)
Power Supply	59.0 cm (23.3 in)	35.5 cm (14.0 in)	60.0 cm (24.0 in)	56.7 kg (125.0 lb)

COULTER LH 780 with LH SlideMaker and LH SlideStainer

Dimensions and Weight

	Height	Width	Depth	Weight
SlideMaker	52.1 cm (20.5 in)	74.9 cm (29.5 in)	68.6 cm (27.0 in)	40.9 kg (90.0 lb)
SlideStainer	50.2 cm (19.75 in)	60.3 cm (23.75 in)	76.2 cm (30.0 in)	36.4 kg (80.0 lb)



Shop online at
www.beckmancoulter.com/eStore

Beckman Coulter, the stylized logo, COULTER and LIN-C are registered trademarks of Beckman Coulter, Inc.



Australia, Gladesville (61) 2 9844 6000 Canada, Mississauga (1) 905 819 1234 China, Shanghai (86) 21 3865 1000 Croatia, Zagreb (38) 51 489 9003
Czech Republic, Prague (420) 272 01 73 32 Eastern Europe, Middle East, North Africa, South West Asia: Switzerland, Nyon (41) 22 365 3707
France, Villepinte (33) 1 49 90 90 00 Germany, Krefeld (49) 2151 33 35 Hong Kong (852) 2814 7431 India, Mumbai (91) 22 3080 5000
Italy, Cassina de' Pecchi, Milan (39) 02 953921 Japan, Tokyo (81) 3 5530 8500 Korea, Seoul (82) 2 404 2146 Latin America (1) (305) 380 4709
Malaysia, Kuala Lumpur (06) 3 5621 4793 Mexico, Mexico City (001) 52 55 9183 2800 Netherlands, Woerden (31) 348 462462
Poland, Warszawa (48) 22 366 0180 Puerto Rico (787) 747 3335 Singapore (65) 6339 3633 South Africa/Sub-Saharan Africa, Johannesburg (27) 11 564 3203
Spain, Madrid (34) 91 3836080 Sweden, Bromma (46) 8 564 85 900 Switzerland, Nyon (41) 0800 850 810 Taiwan, Taipei (886) 2 2730 2500
Turkey, Istanbul (90) 216 570 17 17 UK, High Wycombe (44) 01494 441181 USA, Brea, CA (1) 800 352 3433, (1) 714 993 5321