



**SD1**  
Ultrasonic Pocket Doppler

## About Edan

Edan is a healthcare company dedicated to improving the human condition around the world by delivering value-driven, innovative and high-quality medical products and services. For over 20 years, Edan has been pioneering a comprehensive line of medical solutions that address a broad range of healthcare practices including:

- Diagnostic ECG
- Patient Monitoring
- OB/GYN
- Ultrasound Imaging
- Point-of-Care Testing
- *In-Vitro* Diagnostics
- Veterinary

Healthcare professionals around the world depend on Edan's breakthrough medical technologies and outstanding customer support.



**Global Headquarters:**  
Edan Instruments, Inc. | No.15 Jinhui Rd., Jinsha Community,  
Kengzi Subdistrict, Pingshan District, Shenzhen | 518122 P.R. China  
+86.755.26898326 | [www.edan.com](http://www.edan.com) | [info@edan.com](mailto:info@edan.com)  
**U.S. and Canada inquiries:**  
EDAN Diagnostics, Inc. | 9918 Via Pasar, San Diego, CA 92126  
+1.858.750.3066 | [www.edandiagnostics.com](http://www.edandiagnostics.com) | [edan-info@edandiagnostics.com](mailto:edan-info@edandiagnostics.com)

© Edan Instruments, Inc. All rights reserved. Features and specifications are subject to change without prior notice. No reproduction, copy or transmission may be made without written permission. Not all products or features are available in all countries, contact Edan for local availability.



ENG-OB & GYN-SD1-V2.2-20200101

# SD1

Ultrasonic Pocket Doppler



# SD1

## Ultrasonic Pocket Doppler

Our newly innovation, the all-in-one compact handheld Doppler, SD1, is a remarkable member of Edan's ultrasound Doppler series. Compared with conventional technology, SD1 took a giant leap by introducing the pulse wave technology. The user can locate the fetal heart rate signal quicker and easier. The extremely low radiation level give you a safer and more comfortable way during application. Smart phone solution makes evaluation and examination much more convenient. In addition, aside with professional clinical usage, SD1 is also a user friendly home-based device that allow you to use it anywhere, everywhere.

### Features

- ALL-IN-ONE design
- Built in speaker
- Touch panel for easy control
- Built in Bluetooth
- Android or iOS APP access for tracking baby's development
- 3MHz probe detects fetal heart beat
- AA batteries for easy replacement
- Pulse wave technology



SPEAKER



TOUCH PANEL



DIGITAL DISPLAY



APP ACCESS



### Mobile APP Application

Model: SD1 with APP / SD1 without APP



## New Wave, New Safe

Traditional fetal doppler detect fetal heart rate using continues wave (CW) technology. New pulse wave (PW) technology has greatly increase the signal penetration and sound quality, increased overall performances and provide you the best experiences for listening to the heart beats.

### Getting the fetal heart with SD1

#### More Convenient

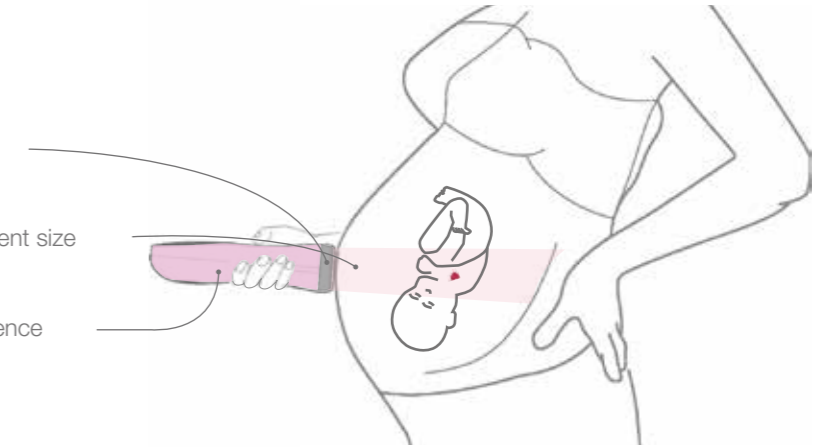
No special angle requirement for user

#### Deeper

Better signal penetration for various patient size

#### Clearer

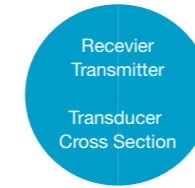
Greatly reduced sound-to-noise interference



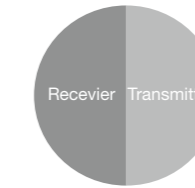
### We make more room for love



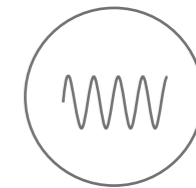
Pulse Wave



Effective area = 100% Full area



Effective area = 50% Full area



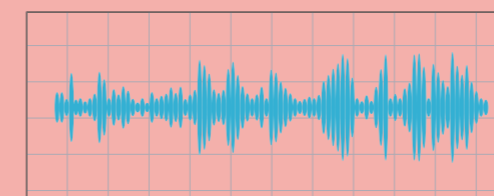
Continuous Wave

EDAN SD1

Other Brands

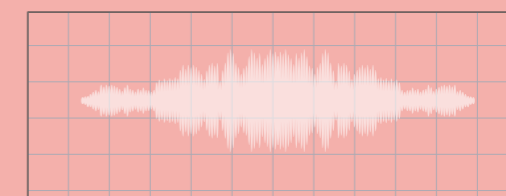
### Intelligent Interference Reduction

Fetal heart sound more smooth and delicate. SD1 has a strong power to detect small signals while at the same time without any large signal distortion. Perform the most real fetal heartbeat sound.



EDAN SD1

With the intelligent interference reduction



Other Brands

Without the intelligent interference reduction