



Porcelain Steel Chalkboard

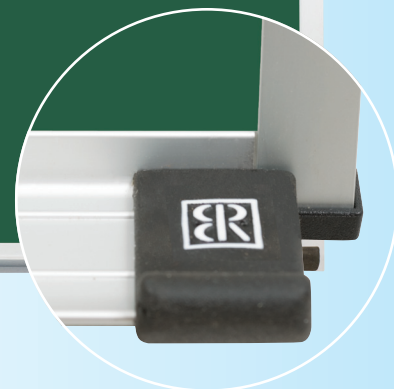


Full-length tackable map rail.



Superior porcelain steel surface features a fine-tooth abrasive finish with superior color contrast, making chalk easier to read.

Dura-Safe® rubber end caps.



- The Porcelain Steel Chalkboard features a fine-tooth abrasive finish and superior color contrast that makes chalk easier to read.
- Vitrified porcelain surface erases without ghosting, and is colorfast and non-fading.
- Surface also doubles as a magnetic bulletin board.
- Clean up is easy with ammonia and water.
- Made in the USA. TAA compliant. 50 year guarantee.

Part No.	Description	Dimensions	Weight
104AA*	Porcelain Steel Chalkboard	1 1/2'H x 2'W	12 lbs
104AB*	Porcelain Steel Chalkboard	2'H x 3'W	22 lbs
104AC**	Porcelain Steel Chalkboard	3'H x 4'W	25 lbs
104AD	Porcelain Steel Chalkboard	4'H x 4'W	69 lbs
104AG	Porcelain Steel Chalkboard	4'H x 6'W	122 lbs
104AH	Porcelain Steel Chalkboard	4'H x 8'W	145 lbs

*Ships UPS **Ships UPS + \$7.50 handling fee
Made in the USA



Best-Rite™

A brand division of MooreCo, Inc.

800.749.2258

www.moorecoinc.com