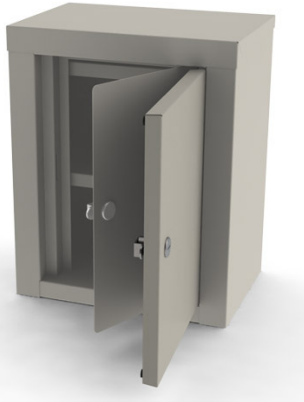


### Double Door Steel Narcotic Locker



Steel Double Doors  
Separate Locks on each Door  
Two Adjustable Shelves  
Cam Style Locks  
14 Gauge Single Inner Door  
3 Year Limited Warranty

The UMF Medical 7781 double door steel narcotic locker features separate locks on each door, which are keyed differently and two adjustable shelves.

The 7781 comes with a 3 year limited warranty.

#### Color Chart:



### Standard Features

- 20 gauge steel cabinet construction
- 20 gauge double wall outer door
- 14 gauge single wall inner door
- Cam style locks with two keys per lock
- Heavy duty piano style door hinge
- Two adjustable metal shelves
- 12 accent colors available
- 3 year limited warranty

### Specifications

- 12.125" Wide (30.8cm)
- 15" High (38.1cm)
- 8.125" Deep (20.6cm)

### Options

- 506 – Master key feature (locks keyed differently, with master key)
- 507 – Additional keys (x2)
- 530 – 110V warning light, factory installed (220V also available as special order)