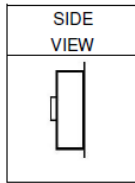
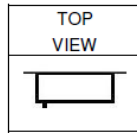


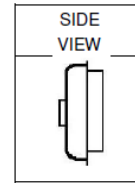
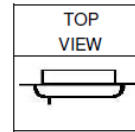
SURFACE MOUNTED CABINETS

	INSIDE CABINET DIMENSIONS		
	Height	Width	Depth
8000-0855	17-1/2"	17-1/2"	9"
8000-0817	17-1/2"	17-1/2"	7"



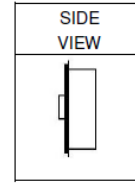
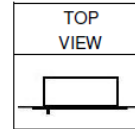
SEMI-RECESSED CABINETS

	INSIDE CABINET DIMENSIONS			WALL DIMENSIONS			ROUGH WALL OPENING		
	Height	Width	Depth	Height	Width	Depth	Height	Width	Depth
8000-0814	14"	14"	7"	17-1/2"	17-1/2"	3-1/8"	15"	15"	4"



RECESSED CABINETS

	INSIDE CABINET DIMENSIONS			WALL DIMENSIONS			ROUGH WALL OPENING		
	Height	Width	Depth	Height	Width	Depth	Height	Width	Depth
8000-0811	14"	14"	7"	17-1/2"	17-1/2"	15/16"	15"	15"	6-1/4"



ALL ZOLL AED CABINETS ARE STANDARD EQUIPPED WITH 200900 ALARM SYSTEM

GENERAL DESCRIPTION

All cabinets have continuous hinge, roller catch and chrome handle
 All cabinet tanks are 20 gage steel.
 Stainless steel has a #4 polished finish
 All cabinet tanks are steel.

Semi-recessed and recessed cabinets are ADA compliant
 MMP AED cabinets are licensed under U.S. Patent Numbers 6,301,501 and 6,735,473, and Canadian patent number CA2406541.
MMP AED cabinets are made in the USA.