

Adscope™ Sprague

Use, Care,
& Maintenance



Thank you for choosing an ADC® ADSCOPE™ Stethoscope. Your new ADC® ADSCOPE™ stethoscope is designed to provide unsurpassed acoustic sensitivity, unrivalled durability, and unparalleled comfort. Every component has been carefully designed to maximize performance.


Device Description and Intended Use


This device is intended for medical diagnostic purposes only. It can be used for listening to heart, lung and other body sounds as well as for normal auscultation. The device is not designed, sold or intended for use except as indicated.

General Warnings

A warning statement in this manual identifies a condition or practice which, if not corrected or discontinued immediately, could lead to patient injury, illness, or death.

 **CAUTION:** Never use stethoscope without eartips firmly locked in place.

 **NOTE:** When first unpacked, your Sprague tubing may experience some kinks from packaging. This is normal. To uncurl, hang scope for 24 hours at room temperature.

 **WARNING:** This product may contain a chemical known to the state of California to cause cancer, birth defects, or other reproductive harm.

Chestpiece Options

The ADC® Sprague design utilizes five different interchangeable chestpiece attachments (3 bells and 2 diaphragms) to detect a broad frequency range in both pediatric and adult patients. The chestpiece drum accommodates 2 different chestpiece attachments of your choice at one time. Select the type that best suits the intended patient application.



Adult diaphragm assembly - for filtering out lower frequencies and accent the higher ranges in adults.



1" bell - for detecting low and medium pitched sounds and murmurs in children.



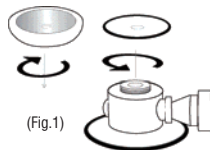
Pediatric diaphragm assembly - for detecting high pitched murmurs in infants and children.



3/4" bell - for detecting low and medium pitched sounds and murmurs in infants.



1 1/4" bell - for detecting low and medium pitched sounds and murmurs in adults.



(Fig. 1)

Chestpiece attachments can be affixed by threading clockwise until tight. To remove, twist in a counterclockwise direction. (Fig. 1)

Selection of the Chestpiece

On ADC® ADSCOPE™ Spragues, the entire chestpiece rotates 180° permitting the selection of one side. (Only one side is operable at a time). ADC®'s patented valve mechanism eliminates virtually all acoustic leakage



Adult Diaphragm
Activated

from the inoperable side.

To select the side in operation, hold the chestpiece stem in one hand and rotate the chestpiece with the other hand until a click is felt and heard. A light tap on the diaphragm or bell will help determine which side is in operation as well.



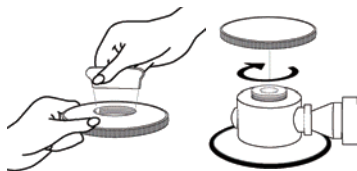
Chestpiece Key

ADC®'s proprietary chestpiece design and slotted key allows you to tighten the pediatric or adult assembly as securely as you like (to reduce risk of loss) without fear of being unable to disassemble the rim in order to replace a worn or broken diaphragm (a problem that often plagues less costly Sprague scopes).



Replacing the Diaphragm

To replace a diaphragm, remove the desired assembly by gripping the assembly firmly and turning counterclockwise.

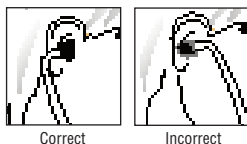


To loosen the diaphragm rim, insert the key into the two slots located within the threaded portion, located on the underside of the assembly. While holding the rim steady, turn the key counterclockwise to loosen the rim. Remove worn diaphragm and replace with new. Reassemble rim, and tighten by turning key clockwise until tight.

Then reassemble diaphragm rim back onto chestpiece drum by turning clockwise until tight.

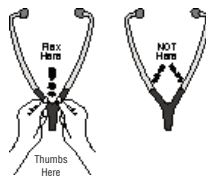
Adjusting the Binaurals

To obtain the most comfortable acoustically sealed aural fit, rotate each binaural tube approximately 15° forward, towards the bridge of your nose. Simply twist each tube where it enters the tubing.



Adjusting the Spring Tension in the Binaurals

To reduce the tension, grip the binaurals firmly using both hands with fingers at the center of the "Y" in the tubing, thumbs at each side where the tubing branches out. Flex binaurals gradually until desired tension is obtained. To increase the tension, grip the binaurals in the hand and squeeze the binaural tubes together gradually. **Caution:** Excessive adjustment of the spring tension could weaken the spring.



Care and Maintenance

- Avoid extreme heat, cold, solvents, or oils.
- Do NOT leave exposed to direct sunlight for prolonged periods of time.
- Binaurals and tubing can be wiped down with alcohol or mild soapy water.
- Eartips may be unscrewed from binaurals for a thorough cleaning.
- Periodically check that eartips are tightly secured to binaurals.
- Do NOT immerse stethoscope in any liquid or subject to steam sterilization.
- If sterilization is necessary, gas sterilize only.

Replacement Parts List



Ref. No.	Item#	Part Name	Qty.	Ref. No.	Item#	Part Name	Qty.
1	640-01D	Chestpiece Drum Assmby	1	12	600-06BK	Eartips, Black, Mushroom	2
2	640-02S	Retaining Ring, Ped.	1	13	640-10	Eartips, Clear, Soft	2
3	640-03S	Diaphragm, Ped.	1	14	640-11	Bell, 1 1/4"	1
4	640-15	Zinc Disk, Ped.	1	15	640-12	Bell, 1"	1
5	640-14	Zinc Disk, Adult	1	16	640-13	Bell, 3/4"	1
6	640-03	Diaphragm, Adult	1	17	640-18	Accessory Pouch	1
7	640-02	Retaining Ring, Adult	1	18	640-19	Chestpiece Key	1
8	641-05T	Tubing, 22" (spec. color)	2	3	640-03S	Diaphragm, Ped. (spare)	1
9	640-16	Tubing Clip	2	6	640-03	Diaphragm, Adult (spare)	1
10	640-05	Binaurals with 640-09 Eartips	1				
11	640-09	Eartips, Black	2				

LIMITED WARRANTY

American Diagnostic Corporation (ADC®) warrants its products against defects in materials and workmanship under normal use and service as follows:

1. Warranty service extends to the original retail purchaser only and commences with the date of delivery.
2. Your ADSCOPE™ Sprague stethoscope is warranted for five years from date of purchase (all parts).

What is Covered: Replacement of parts, and labor.

What is Not Covered: Transportation charges to and from ADC®. Damages caused by abuse, misuse, accident, or negligence. Incidental, special, or consequential damages. Some states do not allow the exclusion or limitation of incidental, special, or consequential damages, so this limitation may not apply to you.

To Obtain Warranty Service: Send item(s) postage paid to ADC®, Attn: Repair Dept., 55 Commerce Dr., Hauppauge, NY 11788. Please include your name and address, phone no., proof of purchase, and a brief note explaining the problem.

Implied Warranty: Any implied warranty shall be limited in duration to the terms of this warranty and in no case beyond the original selling price (except where prohibited by law). This warranty gives you specific legal rights and you may have other rights which vary from state to state.

To Register Your Product, visit us at
www.adctoday.com
and follow the links

FOR QUESTIONS, COMMENTS, OR SUGGESTIONS
CALL TOLL FREE:
1-800-ADC-2670



ADC
55 Commerce Drive
Hauppauge, NY 11788
U.S.A.



ADC (UK) Ltd.
Unit 6, PO14 1TH
United Kingdom

Inspected in the U.S.A.
Made in China
tel: 631-273-9600, 1-800-232-2670
fax: 631-273-9659

www.adctoday.com
email: info@adctoday.com